

**Eagle Defender
Assembly Procedure
Manual, Rev 1.0
PN#: PIM301**

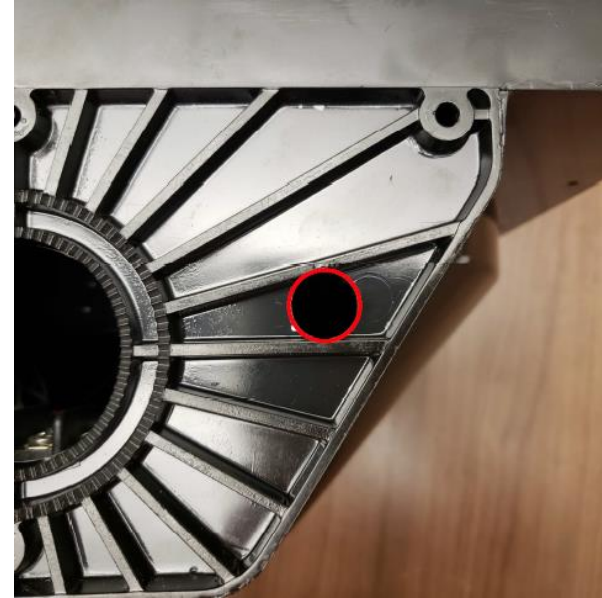
Drill Peripheral Mounting Holes

LED Location



On the bottom of the lowest section, drill a 1/2" hole at the location pictured

Temp and Humidity Sensor Location



Also on the bottom of the lowest section, drill a 5/8" hole at the location pictured

Mount the Signal LED



Feed the LED cable as shown through the 1/2" hole drilled previously. Insert the LED into hole until flush with bottom surface

Tooth Washer

Hex Nut



Slide the tooth washer and hex nut over the LED cable and onto the LED as shown. Tighten hex nut securely.

Mount the Clip for the Temperature and Humidity Sensor



Cut off a 1/2" segment of the supplied adhesive as shown and apply to the back of the clip supplied with the sensor



Adhere clip to inner wall of lowest section, adjacent to and aligned with 5/8" hole drilled previously

Install Temperature and Humidity Sensor

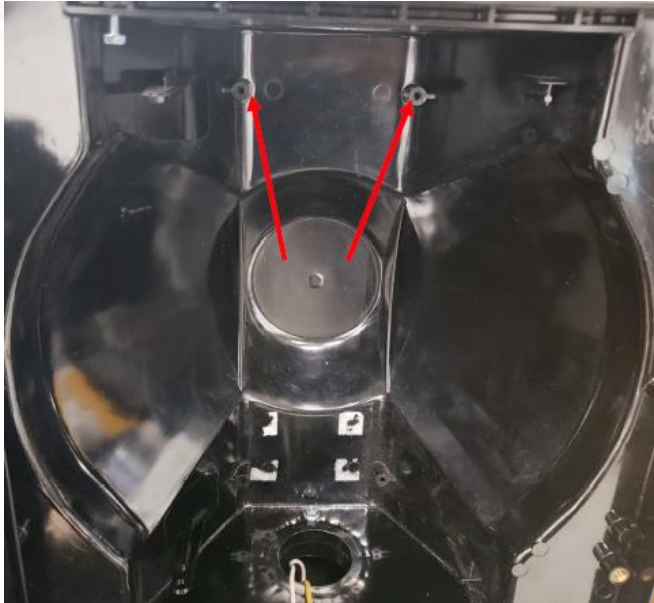


Insert temperature and humidity sensor into clip and through 5/8" hole as shown

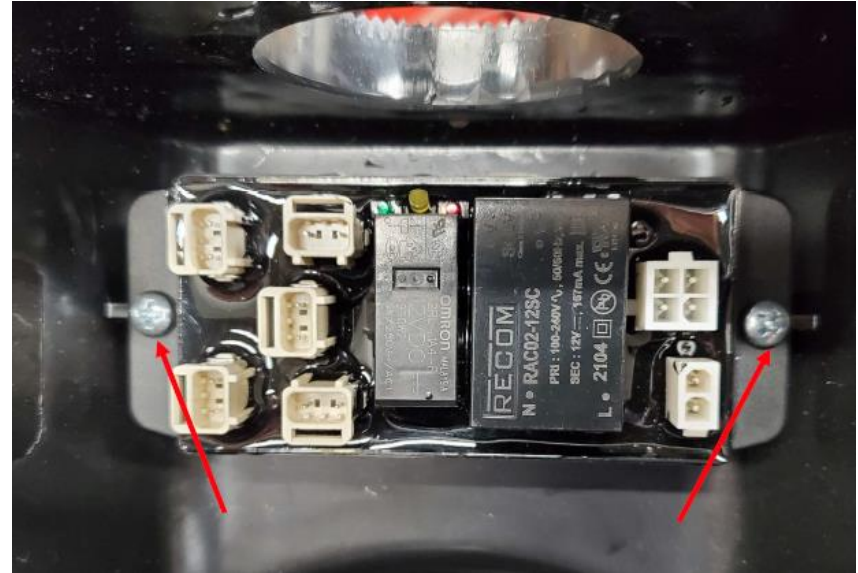


The bottom surface of the lowest section should now appear as shown, run LED and Sensor cables up into center section for the following steps

Mount The Module to the Housing



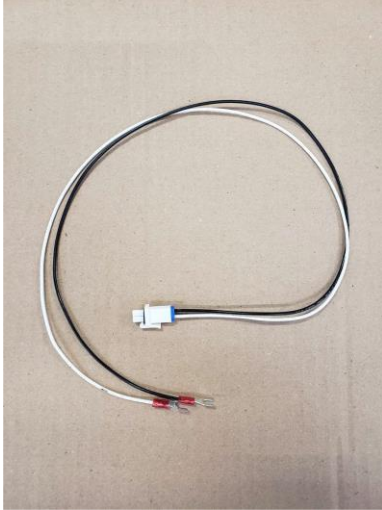
Open the center section of the signal and locate the mounting holes on the back face near the top*



Using the supplied self-tapping screws, screw the module into the mounting holes

*If no mounting holes are present, use remaining adhesive patch to mount module in roughly the same location

Connect Power to the Module



Locate the power connector cord

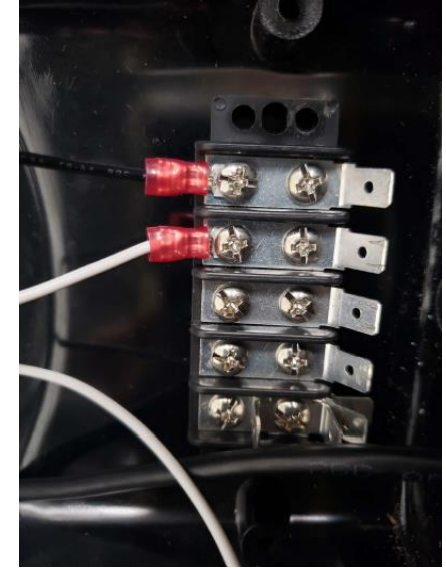
Note:

Black Wire – Hot

White Wire – Neutral



Connect the power cord to the keyed port on the module



Connect the #8 spade tongue connectors for the hot and neutral lines to the corresponding terminals on the main power board

Plug In Peripheral Units

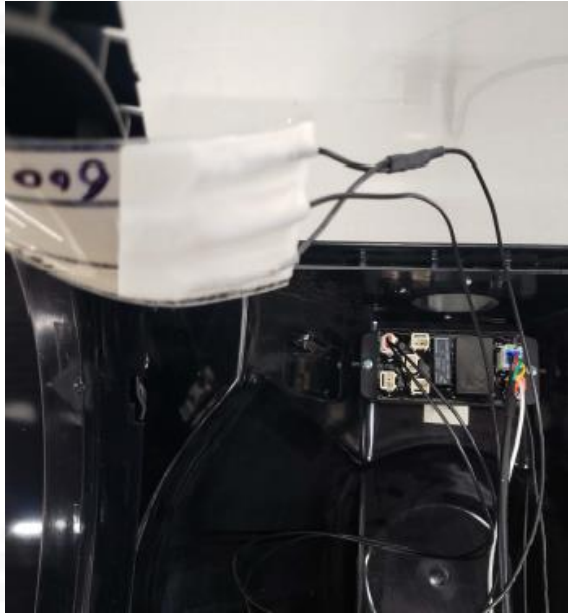


Plug the Sensor cable into the keyed port on the module



Plug the LED cable into any of the five white ports on the module

Connect Heaters to the Module



For each heater, run the pre-attached power harness to the section that contains the module



Connect each heater to one of the remaining white ports on the module

Field Installed LED

